

Take a closer look. The SCX400T, 40ton telescopic boom crawler crane.

Developed under accumulated and current advanced technologies to answer any of demands and requirements from crawler crane user, especially foundation job specialists throughout the world along concept themes of "good manoeuvrability", "high work-efficiency", "transportation ease" and so on.

Boom length

10.06 — 32.00 m

Rope line speed

100 m/min (1st drum layer)

Rated line pull

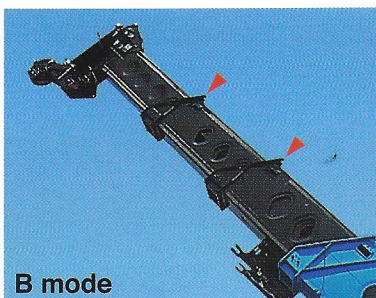
49 kN(5tf)

Productivity

A strong machine with high boom strength and attachment features.



A mode

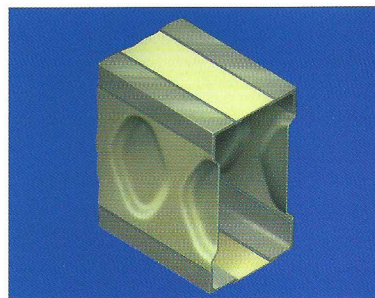


B mode

To enhance performance, the exclusive boom telescoping mode "A" extends only the second section to 17.37m offering substantially increased capacities for in-close, maximum capacity picks while the other boom telescoping mode "B" is available as basic boom extension mode that offers a full power, synchronized mode of telescoping all sections proportionally to 32.00m. By activating a switch located at instrument panel of operator cab, it is easily choose these boom telescoping modes.

Further, to get high lifting performance, boom head machinery takes a light-weight nylon sheaves. An optional lifting sheave is designed with the same too.

Hammerhead boom nose allows the operator to work at high boom angle without fouling wire rope. In addition, a Quick Reeve Boomhead is exclusively designed to allow rope to be easily reeved over boomhead without removing rope socket from wedge.



Embossed sidewall stiffeners with a 689.5MPa high strength angle chord at 4 comers where maximum stress is concentrated is exclusively designed on boom for "maximum strength with minimum weight" under maximum structural integrity.

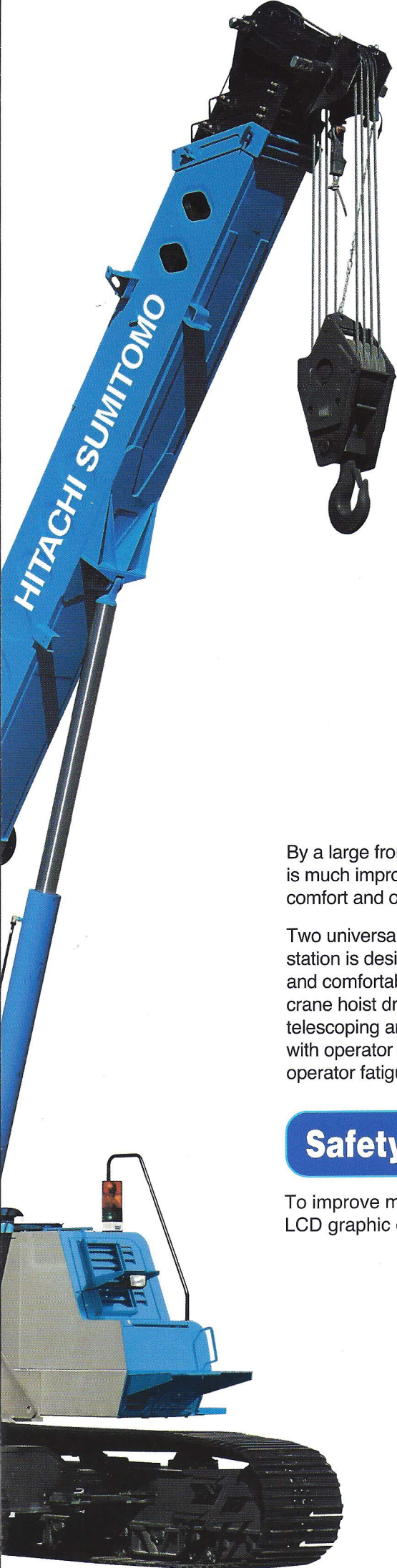
Transportability

As a general, the telescopic boom crawler crane features a good manoeuvrability whenever transport from site to site as disassembling/assembling of a 4-section boom is only required.

In the meantime, dimensions and weight for complete machine transport with boom are:

- Dimensions (L×W×H) : 12.5×3.35×3.19
- Weight : Approx. 45.2t

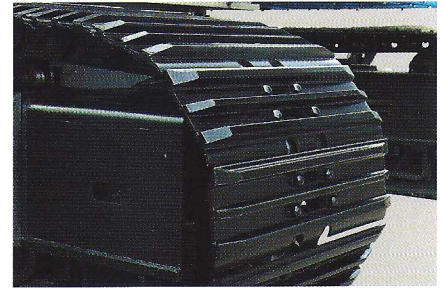




Manoeuvrability

Undercarriage is designed with tractor type tracks.

To get further smooth travelling, a tractor type tracks with 3-bar grouser shoes is standardized with hydraulic track adjusting device (with grease cyl.) like hydraulic excavator.



Controllability

Operator comfort with simplified & functional control station layout.

The cab is mounted on cushion rubber, and is designed with a high airtight sliding door. It accordingly results in lower noise in cab and greatly reducing operator fatigue during operation.

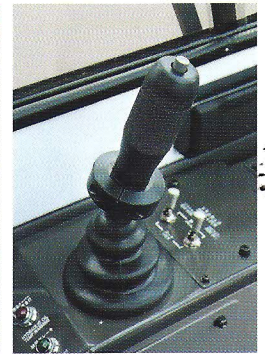
A simplified layout of control levers and monitoring panel is provided for operation ease too.

To set most of suitable operator position, a full adjustable reclining seat and electrically tiltable control stand are well designed further more.



By a large front window, the visibility is much improved for operator comfort and operation ease.

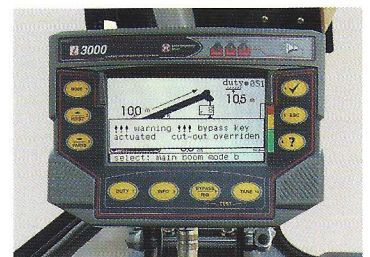
Two universal joystick control station is designed for a good, easy and comfortable operation for main crane hoist drum, swing, boom telescoping and boom elevating with operator comfort under less operator fatigue.



Safety

New Load Moment Indicator (LMI) of English WYLIE brand is provided.

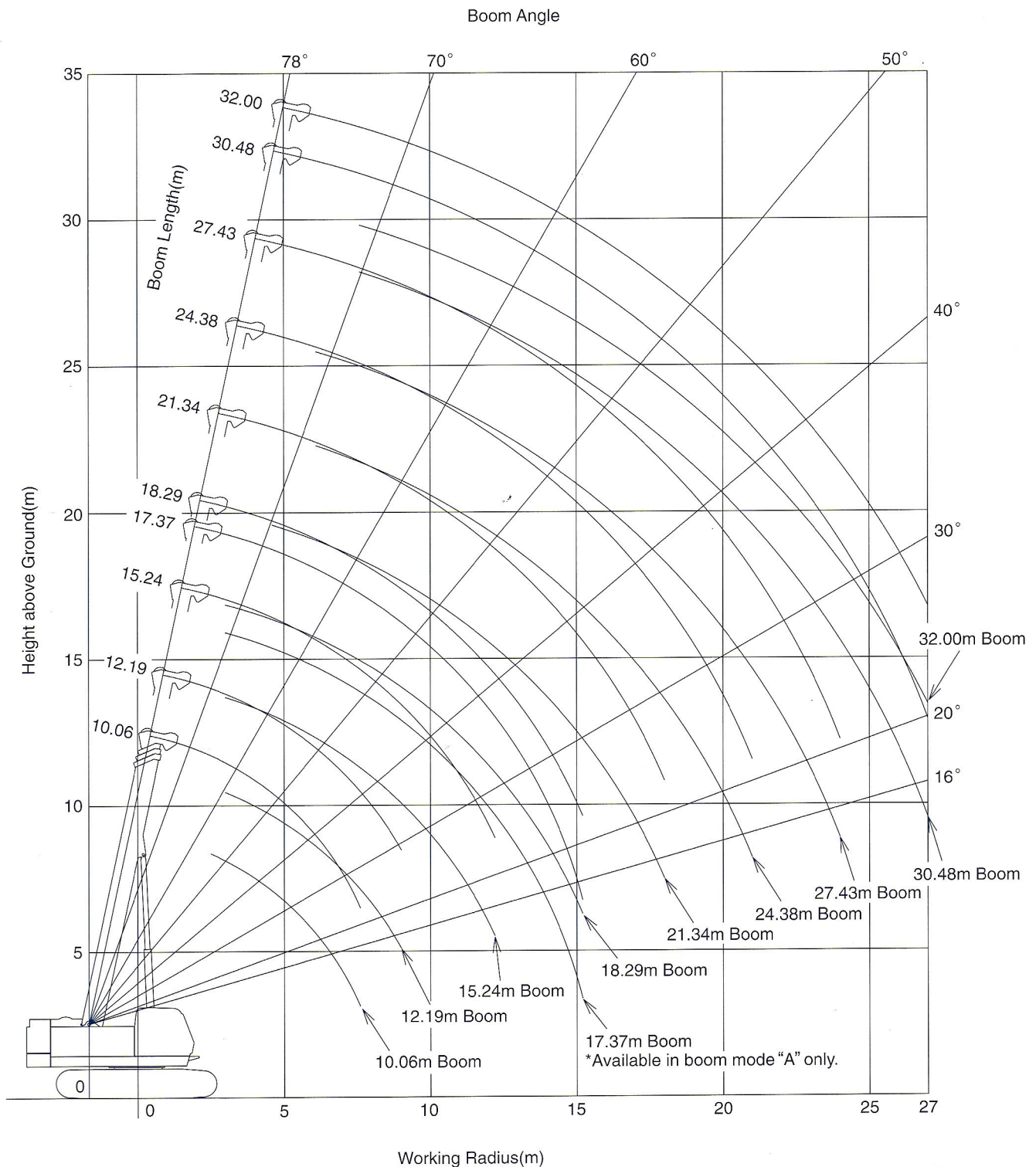
To improve machine operation safety more than ever, LCD graphic display panel with reflectionless is standardized.



A Keen attention to Environment

The engine meets current EU Emission Regulations for Off-Road Diesel Engine-Stage 3, and Japanese Standard for Diesel Construction Equipment-Stage 3. And, the SCX400T clears low noise levels as defined by Ministry of Land, Infrastructure and Transport of Japan under new noise measuring methods regulated by ISO.

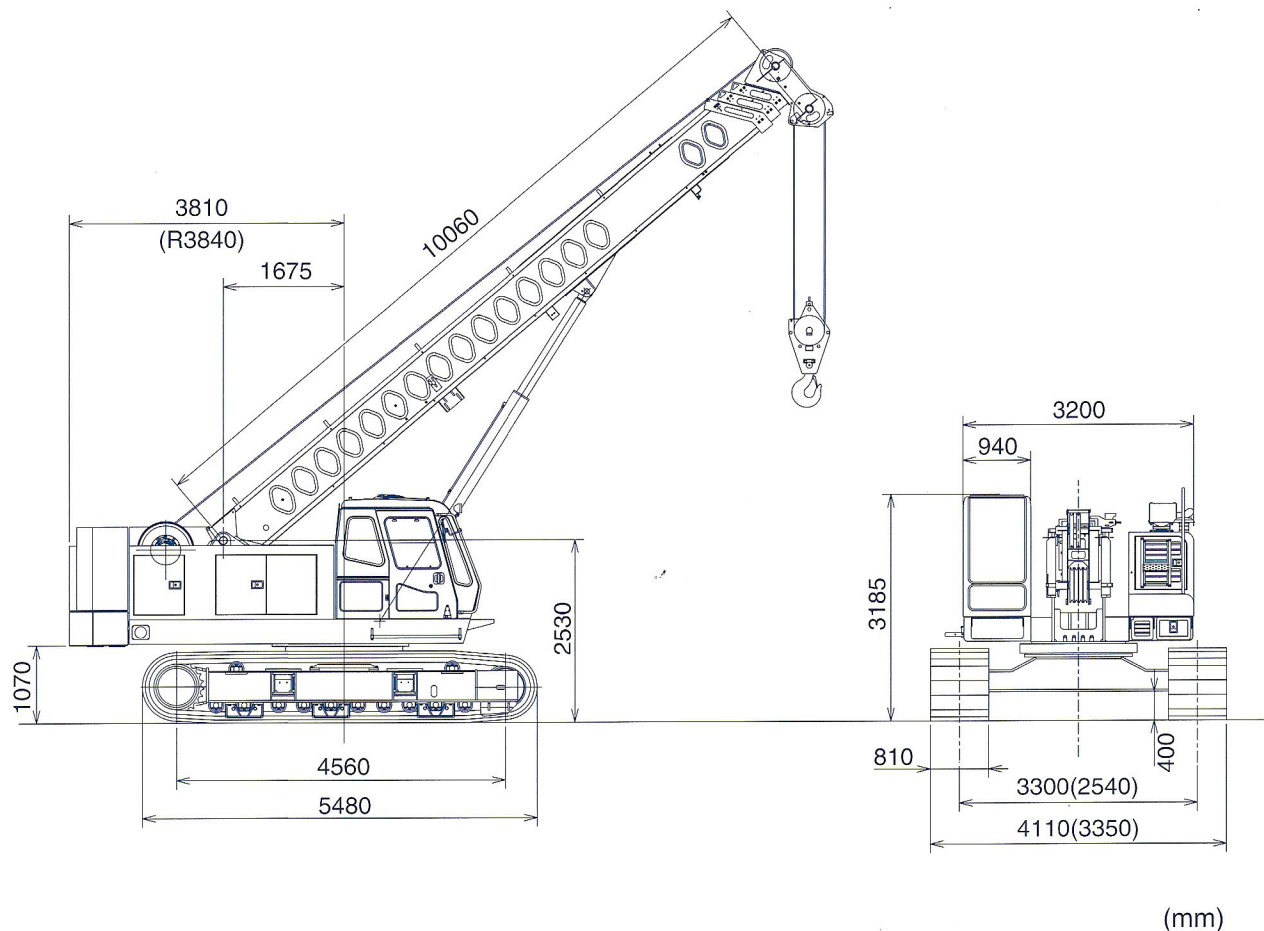
Working Ranges



Notes :

1. The above diagram shows two kinds of locuses of boom peak sheave and hook points; the lower lines each indicate the locus of hook point, and upper lines each show the locus of boom peak sheave point.
2. A 4-boom length of 10.06/12.19/15.24/17.34m is available in boom telescoping mode "A" while a 9-boom length of 10.06/12.19/15.24/18.29/21.34/24.38/27.43/30.48/32.00m is available in mode "B".

General Dimensions (w/Service refill capacities data)



Note: The figures in parenthesis are in the case that crawler side frames are fully retracted.

Service Refill Capacities (in liters):

Full tank	300
Engine coolant	27
Engine oil	23
Main crane hoist drum reduction gear unit	11.5
Swing reduction gear unit	8
Travel reduction gear unit	11.5×2
Hydraulic system, including reservoir tank capacity	650
Hydraulic oil reservoir	450